



RED-LIGHT AREA MAPPING

VASHI-TURBHE

2024-25



ABOUT PRERANA

Prerana is a civil society organization that started working in the Red-Light Areas (RLA) of Mumbai in 1986 first with a view to eliminate inter-generational trafficking i.e. trafficking of the children of the sex trafficked prostituted women, into the sex trade, its allied activities or exploitative labour. To achieve this, we at Prerana evolved several pathbreaking interventions, piloted them, and created a success story out of each intervention, and disseminated them widely to facilitate their mainstreaming. To address the issues faced by the prostituted women in the RLAs, we expanded the scope of our interventions to fight the violence perpetrated against them and to protect their legal and human rights.

ABOUT VASHI-TURBHE

While Mumbai's inner-city Red Light Areas (RLAs) like Kamathipura and Falkland Road face real estate contraction and vertical re-engineering, the Vashi-Turbhe RLA in Navi Mumbai presents an entirely different crisis. Since Prerana initiated interventions here in 2001, its social workers have documented a deeply troubling evolution. Unlike its south-central Mumbai counterparts, which are structurally bound and shrinking, the Vashi-Turbhe RLA is actively growing in size and density. It serves as a stark example of how the metropolitan sex trade expands by dispersing toward the urban periphery.

The physical infrastructure of Vashi-Turbhe distinguishes it immediately from traditional districts. It is smaller in overall footprint than Falkland Road, but it completely lacks permanent, "pucca" vertical buildings or chawls. Instead, the area is composed entirely of old, dilapidated "kuccha" hutments and shanties. Previously, women stayed in the surrounding vicinity and used these spaces only to entertain customers. Today, field data reveals a dangerous shift: women now live directly inside these unstable, broken brothel structures full-time, fusing their daily survival with spaces of active exploitation.

The social structure within Vashi-Turbhe reveals an intensified system of hyper-surveillance. The area is defined by an exceptionally high proportion of pimps to prostituted women, creating a deeply hostile environment.

Vashi-Turbhe acts as a vital receiving hub for complex, cross-border trafficking networks and internal displacement pipelines. A large majority of the women trapped here originate from transnational routes—specifically Nepal and Bangladesh—as well as regional corridors like Kolkata. Furthermore, women are routinely moved to this peripheral RLA by perpetrators from older, shrinking red-light districts like Kamathipura in Mumbai and Budhwar Peth in Pune for various operational reasons.

This intersection of severe confinement, sub-human housing, and high financial exploitation has created an acute humanitarian crisis for families. The prostituted mothers trapped in these kuccha networks represent a highly vulnerable demographic, cut off from mainstream civic services. Because mothers face severe restrictions on their movement, their dependents bear the heaviest structural burden.

Prerana's social workers consistently find acute, highly visible malnourishment among the children growing up inside these shanties. As this peripheral RLA continues to grow, these children remain at extreme risk of being permanently absorbed into an intergenerational cycle of bondage.



SERVICES IN THE RED-LIGHT AREAS

Night Care Centers (NCC)

The Night Care Centre program was initiated as a response to an expressed need for the safety and well-being of the children of the prostituted women. Located in/near the red-light area, the NCC is a safe shelter where children are taken care of so that they are de-linked from the traumatising influences of the happenings in the red-light areas during the dangerous night hours while their mothers are made to entertain customers. The NCC provides services such as – protected shelter, safe sleeping place, responsible adult supervision, wholesome nutrition, access to hygienic toilets and bathrooms, constructive recreation on a daily basis, and other periodic but regular services such as health check-ups, referrals, mental health support, education support, safe play options, along with opportunities for skills development, awareness sessions, and an overall platform for holistic personality development and growth.

The NCCs have a comprehensive nutrition and health component that adopts a holistic approach. Carefully planned nutritious meals are served four times a day (six times during Prerana's Summer Camp) to the children. Health and medical services follow a systematic process including a complete general health check-up, periodic follow-ups, and end-to-end support for the management of specific medical conditions.

Apart from this, our teams managing the NCC also work to ensure that the children have their personal Identity Documents like birth certificates, school bona fide document and other social protection Eligibility Documents like Aadhaar cards and ration cards. They also ensure that children have access to public services like public distribution systems (PDS). They hold meetings with the mothers on various issues and concerns related to their children's health, education and overall wellbeing. At present, Prerana runs three NCCs located in/near the red-light areas of Kamathipura, Falkland Road, and Vashi-Turbhe Stores.



A Maushi and Child at NCC, Pictured by Elisabeth Granli

Institutional Placement Program (IPP)

IPP was evolved in consultation with the prostituted mothers in the red-light areas. Some mothers approached us saying that their children aren't safe in the brothels. In some cases children expressed their safety concerns themselves. In certain other cases, it was the terminal illness of the mother. In some cases the cause of the mother's death necessitates Prerana social workers to refer the child to the Child Welfare Committee (CWC) and they are then placed into appropriate Child Care Institutions (CCIs). The mothers want to de-link their children from the traumatising impact of the RLAs and place them in other safe places for residential care and protection. While we firmly believe that a child must grow in a family and institutionalisation should be the last resort, the fact is that the family structure for these children is different. Their surroundings in the RLA are often unsafe for them, and their mothers are themselves struggling to fight violence. In such a situation, institutionalisation serves as the last resort. At present, the IPP is a structured intervention that involves collaborations with the government and non-government services, and child protection systems to ensure successful protection, rehabilitation and social reintegration of children in need of care and protection. The IPP program reaches out and supports children and mothers, and is run across all the three red-light areas where we work.

Educational Support Program (ESP)

ESP is an intervention that caters to all educational needs of children living with their mothers in the Red Light Areas, and also those whose mothers have moved out of the red Light Areas and are still in the sex trade. ESP focusses on curricular, co-curricular, and extracurricular activities. The team keeps a track of the progress made by the children at their respective educational institutions by visiting their schools and colleges regularly. They also actively follow up with the mothers, involve, encourage and support them to participate in their children's educational progress. Besides this, the program team organizes study classes during the evening hours wherein qualified teachers provide support to school/college-going students in their studies and project work. Prerana also collaborates with other donors to provide educational scholarships for students who want to pursue advanced or professional degrees, and to those students who have to pay school/tuition/extra coaching fees. This program is deployed at all the Prerana NCCs through a dedicated team of social workers, teachers, and other resource persons.

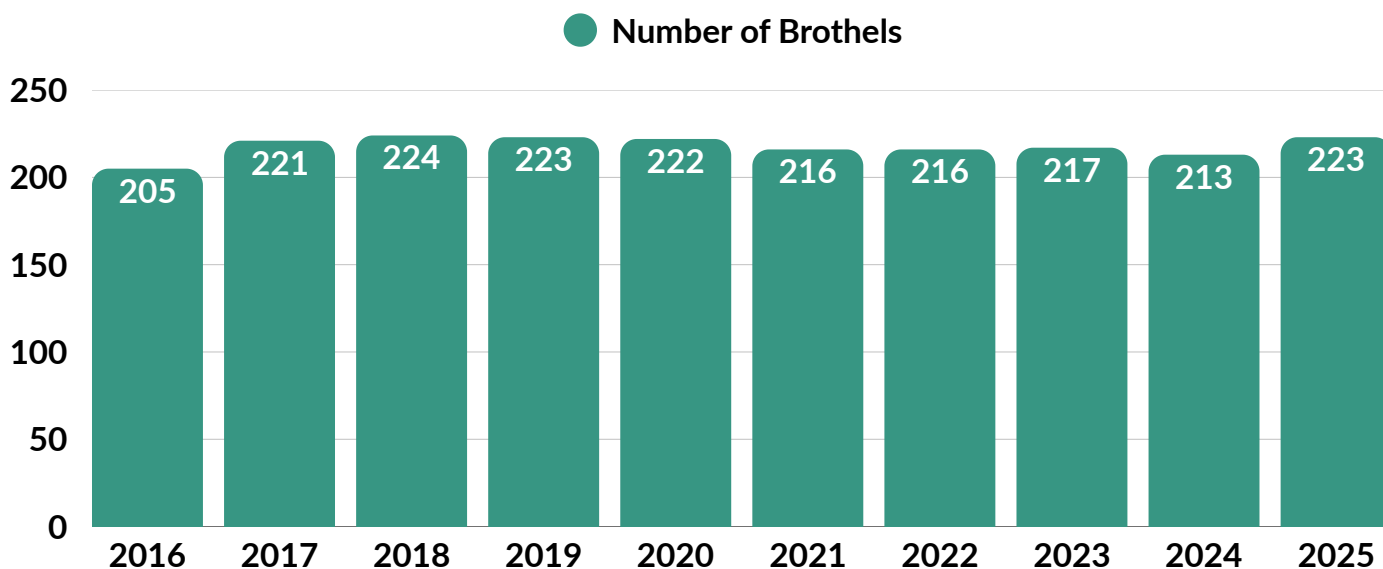
RED-LIGHT AREA MAPPING

Over the years, Prerana has witnessed significant changes in the RLAs. Since 2011, Prerana has been routinely mapping the RLAs of Kamathipura, Falkland Road, and Vashi-Turbhe. Through this exercise, the team of Prerana's social workers has identified the changing structures and dynamics of the RLAs. Understanding this is crucial for planning welfare and developmental services and strategies. The annual RLA mapping is undertaken in the months of February and March in the RLAs where Prerana's NCC services are being provided.

Through this document, we hope to indicate the changes in the RLA of Vashi-Turbhe, in 2024-25.

BROTHELS

Between April 2024 – March 2025, following numbers have been observed:



NUMBER OF BROTHELS OVER THE TIME

COMMERCIAL & OTHER ESTABLISHMENTS

1. Grocers, Food Stalls, etc.



Food / Tea Stalls

03



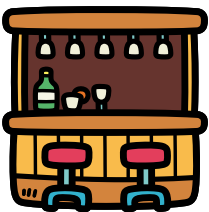
Grocery / Ration Shops

04



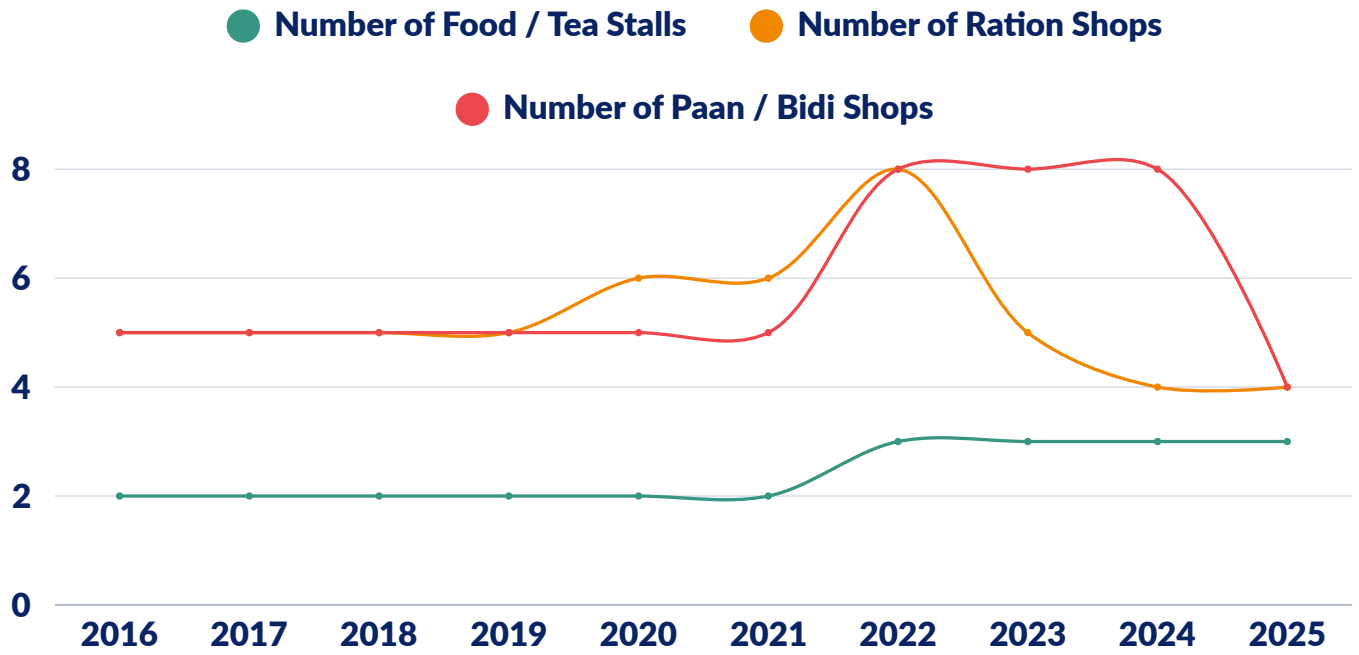
Paan / Bidi Shops

04



Bar

01



THE CHANGING LANDSCAPE OF FOOD & RELATED PRODUCT OUTLETS OVER THE PAST DECADE

2. Manufacturing Units



Drum / Paper Manufacturing

07



Metal Work

01



Masala Packing Units

01



Rolling Press

01



Tailor

01



Woodwork

03

3. Entertainment



Music DJ & Decorator

04

SERVICES

1. Medical Facilities



Medical Clinics

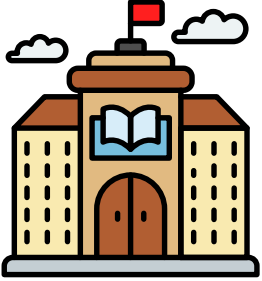
03



Pharmacy

00

2. Educational Facilities



Private Schools

05

3. Civic Services



Police Stations

00



Bus Stops

00



Public Parks & Playgrounds

01



Public Toilet

05

4. NGOs



NGOs

11

NGO	KNOWN SERVICES	WEBSITE
Alert India	Health Services for HIV Positive Women and Day Care Center for Children.	https://alertindia.org
Apne Aap Women's Collective	24*7 open shelter facility for children, Pre-school education, study classes for girls, educational sponsorship, self-help group, grocery distribution to women living with HIV, medical services and vocational training	https://aawc.in/
Aadhar Sheela Kendra	The Aadhar Sheela Kendra provides support to the mothers in paying the children's school fee and tuition fee (limited to needy children)	No Website
Bombay Teen Challenge	Bombay Teen Challenge helps children in Institutional Placements, free Medical check ups in the community . Additionally Group prayers are also conducted for spiritual purposes.	https://btcashagram.org/

NGO	KNOWN SERVICES	WEBSITE
<p>International Justice Mission</p>	<p>International Justice Mission provides PLV (Para Legal Volunteer) Training of Trainers (ToT), and other legal aid services to the community.</p>	<p>https://www.ijm.com/</p>
<p>Manna Prayer House</p>	<p>Manna Prayer House conducts a Balwadi for children from the community, and breakfast is provided to the children.</p>	<p>http://mannaprayerhouse.org/</p>
<p>Sahara Foundation</p>	<p>Sahara provides vocational training for women and also supports children in getting placed in educational institutions.</p>	<p>https://www.sahaarafoundation.in/</p>
<p>Sahasee Embers</p>	<p>The organisation provides tuition classes to children to support their education and improve their academic performance. In addition, the organisation assists children in getting enrolled in school, ensuring that they have access to formal education only in Mahima International school.</p>	<p>https://www.sahaseeembers.org/</p>
<p>Vipla Foundation</p>	<p>The organization provides vocational training such as beauty parlour courses, tailoring, and nursing courses. It also runs tuition classes for children to support their education.</p>	<p>https://www.viplafoundation.org/</p>
<p>White Stone</p>	<p>The organization supports children for their Higher Education, they also provide vocational training or courses and help in school admissions.</p>	<p>No Website</p>

NGO

Kshamata NGO

KNOWN SERVICES

Kshamata reintegrates women and adolescent girls in vulnerable circumstances back into society - equipping them with skills for life and livelihood; empowering them to live independently; and supporting them to build a new life.

WEBSITE

<https://kshamata.org/>



Disclaimer

The information contained in this document has been gathered from the residents, women, and individuals living in the specified Red-Light Area, all of whom are connected with Prerana through its diverse initiatives and efforts in the community. The Prerana team has endeavored to uphold a high level of accuracy while developing this resource. Please note that this document is intended primarily for informational purposes.

If you are aware of any NGOs working with women and children in the Vashi-Turbhe red-light area, we would be grateful if you could share their details with us. We hope to connect with them and include them in this year's community mapping document to strengthen collaboration and outreach efforts.

DATA COLLECTION TEAM

BABY ALI KHAN

MAMTA CHAVAN

DATA TABULATION

MAMTA CHAVAN



www.fighttrafficking.org

*Your trusted knowledge partner in the fight against
human trafficking*

APRIL 2026

For any query, write to us at
contact@preranaantitrafficking.org

**COPYRIGHT © 2026 PRERANA, ALL RIGHTS
RESERVED.**

