



RED-LIGHT AREA MAPPING

FALKLAND ROAD

2024-25



ABOUT PRERANA

Prerana is a civil society organization that started working in the Red-Light Areas (RLA) of Mumbai in 1986 first with a view to eliminate inter-generational trafficking i.e. trafficking of the children of the sex trafficked prostituted women, into the sex trade, its allied activities or exploitative labour. To achieve this, we at Prerana evolved several pathbreaking interventions, piloted them, and created a success story out of each intervention, and disseminated them widely to facilitate their mainstreaming. To address the issues faced by the prostituted women in the RLAs, we expanded the scope of our interventions to fight the violence perpetrated against them and to protect their legal and human rights.

ABOUT FALKLAND ROAD

Falkland Road Red-Light Area (RLA) stands as a stark testament to the dual forces of historic marginalization and aggressive urban gentrification. Spanning a single, dense main arterial street with short, narrow bylanes, this RLA is now officially designated as Patthe Bapurao Marg (P.B. Marg) after the famous Marathi Poet. Unknown to most modern passersby, the road derives its historical name (Falkland Road) from Lucius Cary, the 10th Viscount Falkland and Governor of Bombay (1848–1853), who was instrumental in mapping India's first railway line in 1853.

In the 19th century, the street was a vibrant cultural hub built around drama theaters for Europeans and Indians alike, earning it the popular moniker "Playhouse". Over the next century, however, the area underwent a profound structural mutation. As colonial labor migration routes consolidated, the "Playhouse" district became the focal point for a heavily concentrated red-light area where prostituted women from all over the world gathered, effectively forming one of the earliest globalized, yet highly segregated, enclaves of commercial sexual exploitation in the city.

Today, the old buildings lining the street are highly dilapidated, and their staircases and walls are heavily covered in red paan (betel nut) stains from residents and visitors. The living conditions here are incredibly cramped. On average, 15 women live and work together in tiny, 80-square-foot rooms. Each room contains just two to four small beds separated by thin, tattered curtains. These small beds serve as a woman's workspace (dhandha) and the only home for her and her children.

These brothels operate right next to everyday local businesses, such as restaurants, cigarette shops, and liquor stores, as well as unlicensed doctors claiming to treat sexually transmitted diseases. While the area once housed video parlors that played adult films on demand, it has recently seen a rise in new, mainstream businesses like wholesale saree shops and scrap metal units. At night, the street fills with unfamiliar faces looking for transactional sex from the women and transgender individuals in the area.

Because Falkland Road sits near Mumbai's commercial center, it has become a primary target for real estate developers and property buyers. Because traditional red-light areas have strict boundaries and cannot expand, the sex trade in Mumbai grows by spreading out into smaller, hidden pockets across the city.

In recent years, skyrocketing rents and high property values have pushed many traditional brothels out, allowing commercial shops to take over. Prerana's tracking shows that since 2007, even though the total volume of the sex trade has increased across the wider city of Mumbai, the active sex trade localized within historic RLAs like Falkland Road has steadily decreased.



SERVICES IN THE RED-LIGHT AREAS

Night Care Centers (NCC)

The Night Care Centre program was initiated as a response to an expressed need for the safety and well-being of the children of the prostituted women. Located in/near the red-light area, the NCC is a safe shelter where children are taken care of so that they are de-linked from the traumatising influences of the happenings in the red-light areas during the dangerous night hours while their mothers are made to entertain customers. The NCC provides services such as – protected shelter, safe sleeping place, responsible adult supervision, wholesome nutrition, access to hygienic toilets and bathrooms, constructive recreation on a daily basis, and other periodic but regular services such as health check-ups, referrals, mental health support, education support, safe play options, along with opportunities for skills development, awareness sessions, and an overall platform for holistic personality development and growth.

The NCCs have a comprehensive nutrition and health component that adopts a holistic approach. Carefully planned nutritious meals are served four times a day (six times during Prerana's Summer Camp) to the children. Health and medical services follow a systematic process including a complete general health check-up, periodic follow-ups, and end-to-end support for the management of specific medical conditions.

Apart from this, our teams managing the NCC also work to ensure that the children have their personal Identity Documents like birth certificates, school bona fide document and other social protection Eligibility Documents like Aadhaar cards and ration cards. They also ensure that children have access to public services like public distribution systems (PDS). They hold meetings with the mothers on various issues and concerns related to their children's health, education and overall wellbeing. At present, Prerana runs three NCCs located in/near the red-light areas of Kamathipura, Falkland Road, and Vashi-Turbhe Stores.

Institutional Placement Program (IPP)

IPP was evolved in consultation with the prostituted mothers in the red-light areas. Some mothers approached us saying that their children aren't safe in the brothels. In some cases children expressed their safety concerns themselves. In certain other cases, it was the terminal illness of the mother. In some cases the cause of the mother's death necessitates Prerana social workers to refer the child to the Child Welfare Committee (CWC) and they are then placed into appropriate Child Care Institutions (CCIs). The mothers want to de-link their children from the traumatising impact of the RLAs and place them in other safe places for residential care and protection. While we firmly believe that a child must grow in a family and institutionalisation should be the last resort, the fact is that the family structure for these children is different. Their surroundings in the RLA are often unsafe for them, and their mothers are themselves struggling to fight violence. In such a situation, institutionalisation serves as the last resort. At present, the IPP is a structured intervention that involves collaborations with the government and non-government services, and child protection systems to ensure successful protection, rehabilitation and social reintegration of children in need of care and protection. The IPP program reaches out and supports children and mothers, and is run across all the three red-light areas where we work.

Educational Support Program (ESP)

ESP is an intervention that caters to all educational needs of children living with their mothers in the Red Light Areas, and also those whose mothers have moved out of the red Light Areas and are still in the sex trade. ESP focusses on curricular, co-curricular, and extracurricular activities. The team keeps a track of the progress made by the children at their respective educational institutions by visiting their schools and colleges regularly. They also actively follow up with the mothers, involve, encourage and support them to participate in their children's educational progress. Besides this, the program team organizes study classes during the evening hours wherein qualified teachers provide support to school/college-going students in their studies and project work. Prerana also collaborates with other donors to provide educational scholarships for students who want to pursue advanced or professional degrees, and to those students who have to pay school/tuition/extra coaching fees. This program is deployed at all the Prerana NCCs through a dedicated team of social workers, teachers, and other resource persons.

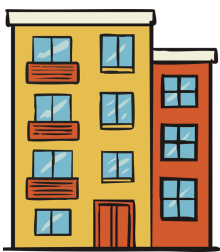
RED-LIGHT AREA MAPPING

Over the years, Prerana has witnessed significant changes in the RLAs. Since 2011, Prerana has been routinely mapping the RLAs of Kamathipura and Falkland Road. Through this exercise, the team of Prerana's social workers has identified the changing structures and dynamics of the RLAs. Understanding this is crucial for planning welfare and developmental services and strategies. The annual RLA mapping is undertaken in the months of February and March in the RLAs where Prerana's NCC services are being provided.

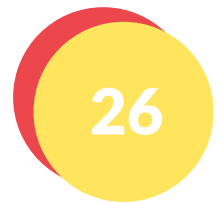
Through this document, we hope to indicate the changes in the RLA of Falkland Road, in 2024-25.

BROTHELS

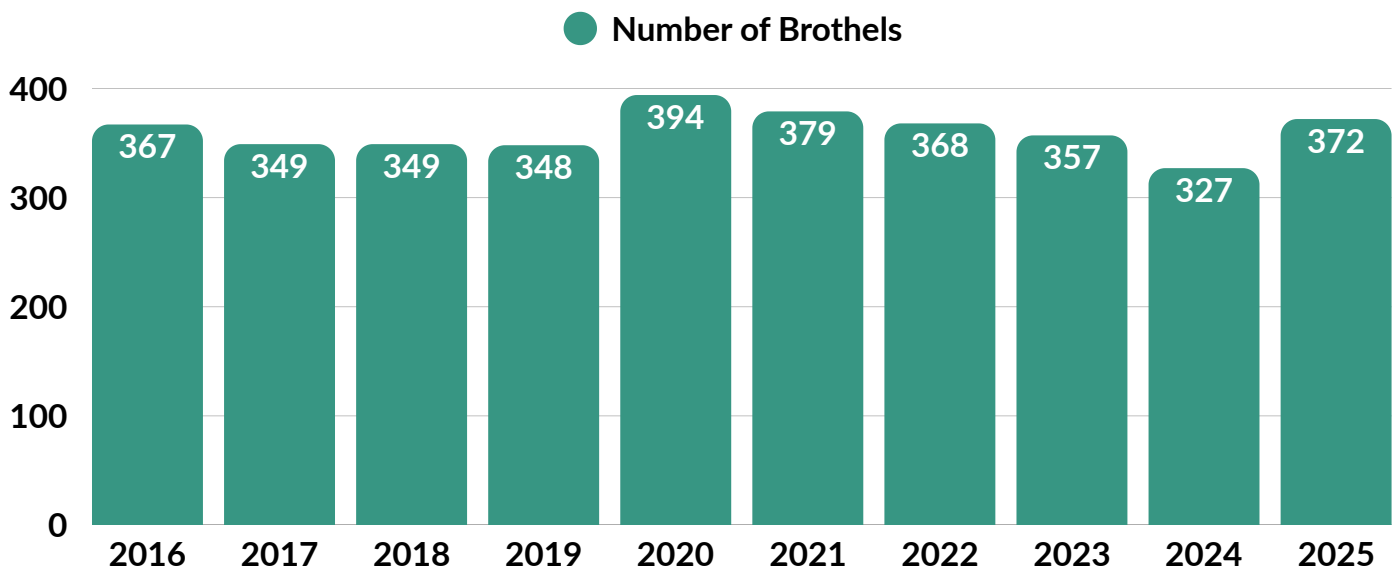
Between April 2024 – March 2025, following numbers have been observed:



Total Number of Brothels



Number of Buildings Surveyed



NUMBER OF BROTHELS OVER THE TIME

COMMERCIAL & OTHER ESTABLISHMENTS

1. Grocers, Food Stalls, etc.



Restaurants and Food Stalls

26



Grocery / Ration Shops

05



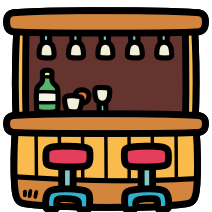
Wine / Beer Shops

03



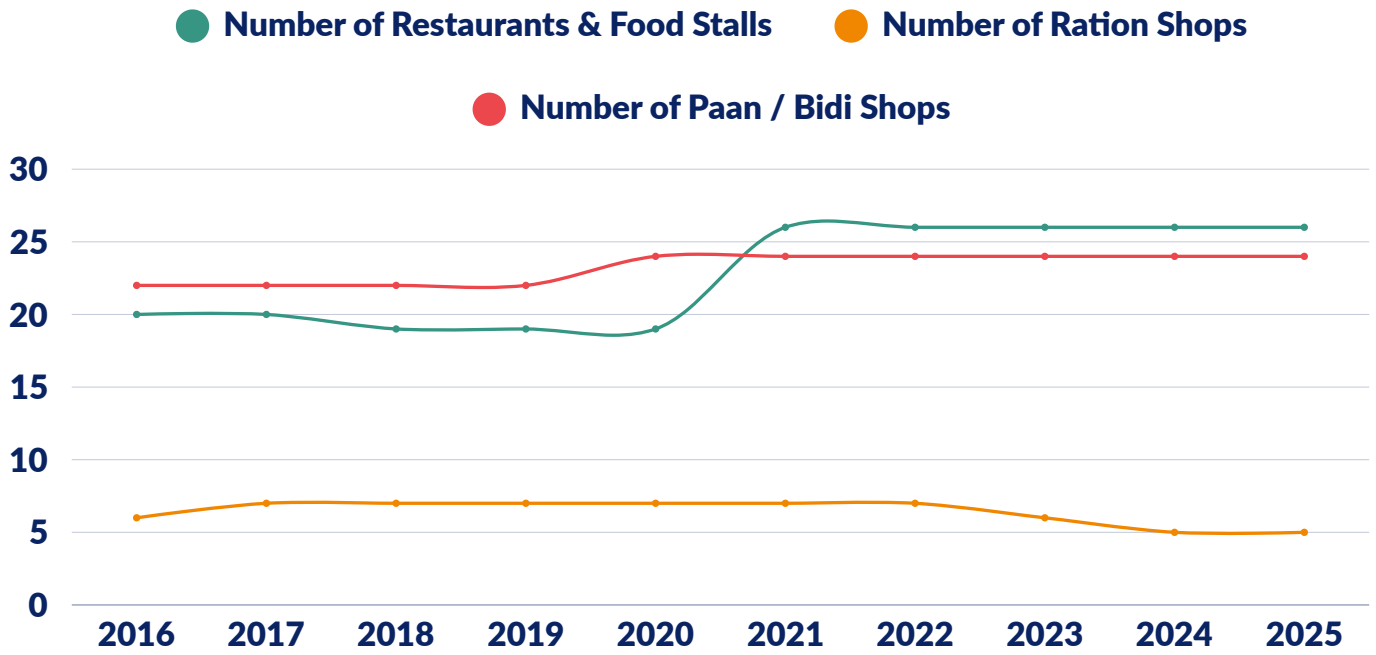
Paan / Bidi Shops

24



Bar

05



THE CHANGING LANDSCAPE OF FOOD & RELATED PRODUCT OUTLETS OVER THE PAST DECADE

2. Manufacturing Units



Zari Wala

00



Metal Work

91

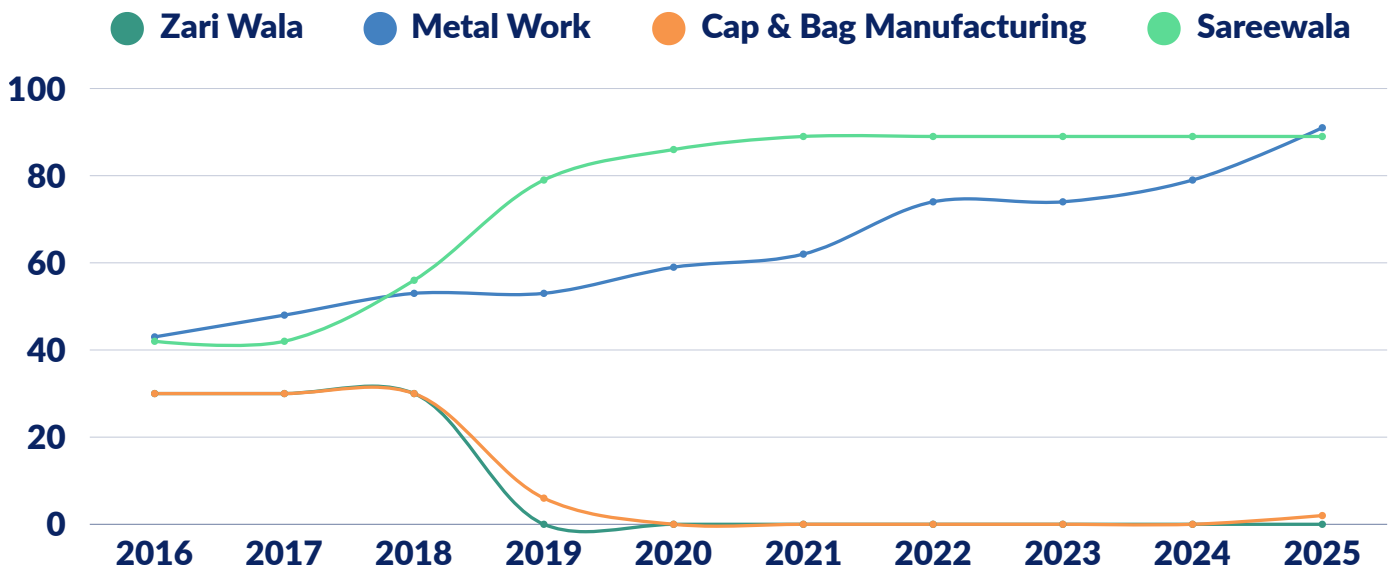


Caps and Bags Making Units

02

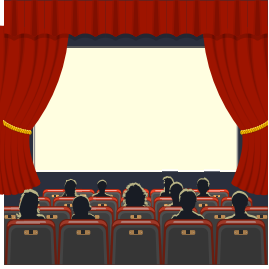


- There were 30 Zari Wala shops in the area till 2018, after which they were all converted into Metal Workshops.



THE CHANGING LANDSCAPE OF MANUFACTURING UNITS OVER THE PAST DECADE

3. Entertainment



Small Theatres (Films)

04



Video Game Parlour

02

SERVICES

1. Medical Facilities



Medical Clinics

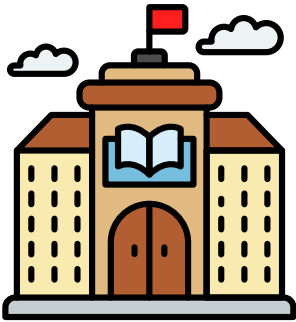
15



BMC Health Post

01

2. Educational Facilities



Private Schools and Colleges

12



BMC Schools

05



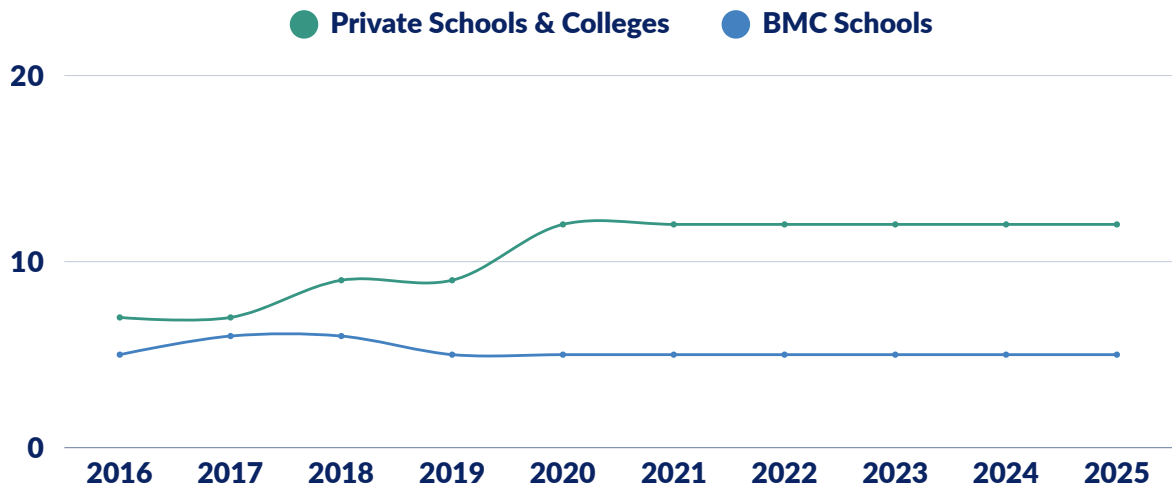
Library

01



Aanganwadi Center

01



NUMBER OF PRIVATE VS BMC EDUCATIONAL INSTITUTIONS OVER THE PAST DECADE

3. Civic Services



Police Stations

01



Bus Stops

01



Public Parks & Playgrounds

03

4. NGOs



NGOs

11

NGO	KNOWN SERVICES	WEBSITE
Alert India	Health Services for Women and Day Care Center for Children.	https://alertindia.org
Apne Aap Women's Collective	24*7 open shelter facility for children, Pre-school education, study classes for girls, educational sponsorship, self-help group, grocery distribution to women living with HIV, medical services and vocational training	https://aawc.in/
Asha Darpan	Social Security Documentation Assistance, Child Safety Vigilance in the Community, and Health Awareness Sessions in the Community.	<u>No Website</u>
Indian Association for Promotion of Adoption and Child Welfare	IAPA provides services in adoption, kinship, educational sponsorships & vocational trainings.	https://www.iapacw.org/

NGO	KNOWN SERVICES	WEBSITE
Lodha Foundation	Library facility for children, educational sponsorship and vocational training.	https://www.lodhafoundation.org
Mumbai Smiles	Mumbai Smiles engages with youth and women through educational sponsorships, life skill sessions, and initiatives aimed at empowering women in the community via Balwadi programs.	https://www.mumbaismiles.org
Navjeevan Centre	Navjeevan is a Day care & Night care center for children. They also work to secure children's social security documents.	https://www.navjeevan.in
Oasis India	Oasis does community outreach work in Falkland Road. They also run a Night Care Center for both boys and girls along with engaging the children in activities and development initiatives.	https://www.oasisindia.org/
Savera Foundation	Savera Foundation works on vocational trainings for women such as tailoring and stitching bags.	https://saveratca.in/
Aastha Parivar	Sexual Reproductive Health and Rights, resource availability, crisis intervention, legal advocacy, social protection, and efforts to reduce risk and vulnerability.	https://aasthaparivaar.org/



Disclaimer

The information contained in this document has been gathered from the residents, women, and individuals living in the specified Red-Light Area, all of whom are connected with Prerana through its diverse initiatives and efforts in the community. The Prerana team has endeavored to uphold a high level of accuracy while developing this resource. Please note that this document is intended primarily for informational purposes.

If you are aware of any NGOs working with women and children in the Falkland Road red-light area, we would be grateful if you could share their details with us. We hope to connect with them and include them in this year's community mapping document to strengthen collaboration and outreach efforts.

DATA COLLECTION TEAM

VAISHALI KARANDE

SHEETAL JADHAV

REEHANBAIG MIRZA

ROSHNI LAKRA

DATA TABULATION

ROSHNI LAKRA

VAISHALI KARANDE



www.fighttrafficking.org

*Your trusted knowledge partner in the fight against
human trafficking*

APRIL 2026

For any query, write to us at
contact@preranaantitrafficking.org

**COPYRIGHT © 2026 PRERANA, ALL RIGHTS
RESERVED.**

